

Configuring for BVI Cable and Wireless Internet

Using BVI Cable and Wireless Internet

What's the Problem?

BVI Cable and Wireless installations usually don't provide network connections with the required IP (Internet) addresses for "Domain Name Servers" (DNS). A Domain Name Server is a computer-based service that translates Internet "names" such as "cnn.com" to addresses such as "66.216.74.58". In other words, DNS is like a phone book: given a name, you get a number. This feature is essential to Internet activity.

Most Internet service providers (ISPs) automatically configure your computer to know at least two DNS server addresses but C&W does not.

Configuring Your Machine

To connect using BVI C&W, you'll have to change your machine's configuration to hard-code these addresses. When you return to the U.S. or wherever, you'll have to undo your changes.

Please note that you'll have to have "Administrator" privilege on your Windows machine to perform these operations. Some business people are routinely given less access to the machine as a security precaution. If you find that you cannot perform some of the steps here, be sure to check with your support staff to find out if you have sufficient access.

If you don't have a Windows computer, check the "Quick Version" section. You'll have to know how to locate the appropriate settings for your operating system.

The Quick Version: For the Technically Proficient

Change TCP/IP Connection DNS Servers

If you understand Internet connections well, here's the "short form". For any Windows network connection that will be used in the BVI, change its TCP/IP protocol's properties to use hard-coded DNS servers; the addresses are **209.88.236.19** and **209.88.236.20**. You may add others if you want.

The Guided Version: For Everyone Else

Step 1: Finding Your Connection

Every modern computer has more than one way to connect to the Internet. The most common methods are:

- Dial-up (using a modem)
- Ethernet (using a wire)
- Wireless Ethernet (such as 802.11b/g, using a plug-in or built-in card)

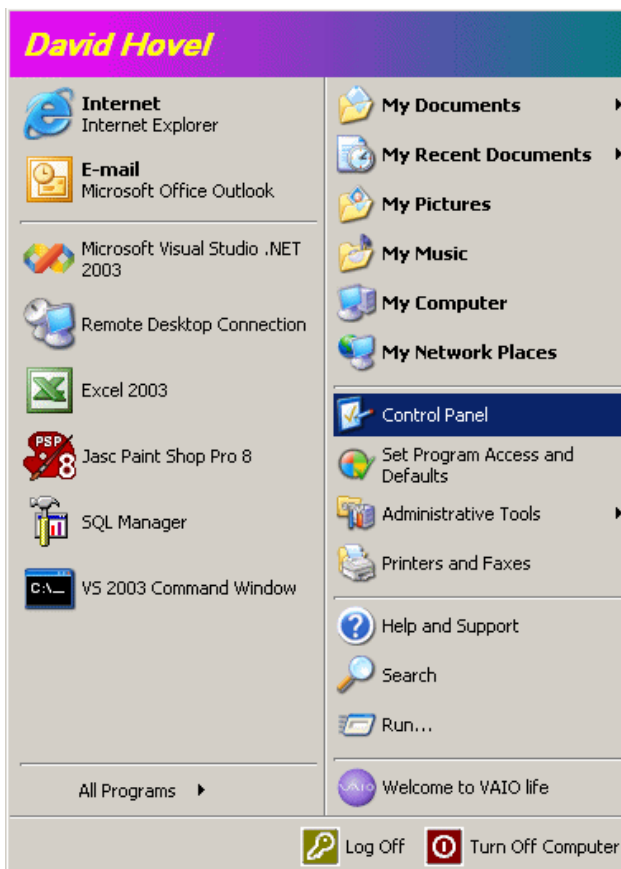
The first step in reconfiguration is to determine which connection you'll be using and how that connection appears on your computer. The following examples are for Microsoft Windows XP, but should be sufficient for Windows 2000 and even Windows 98.

You can access your computer's list of network connections in one of two ways. Either

1. Use the **Start** menu to navigate to **Settings/Network Connections** and choose the connection you intend to use, or
2. Open the Control Panel and select Network Connections.

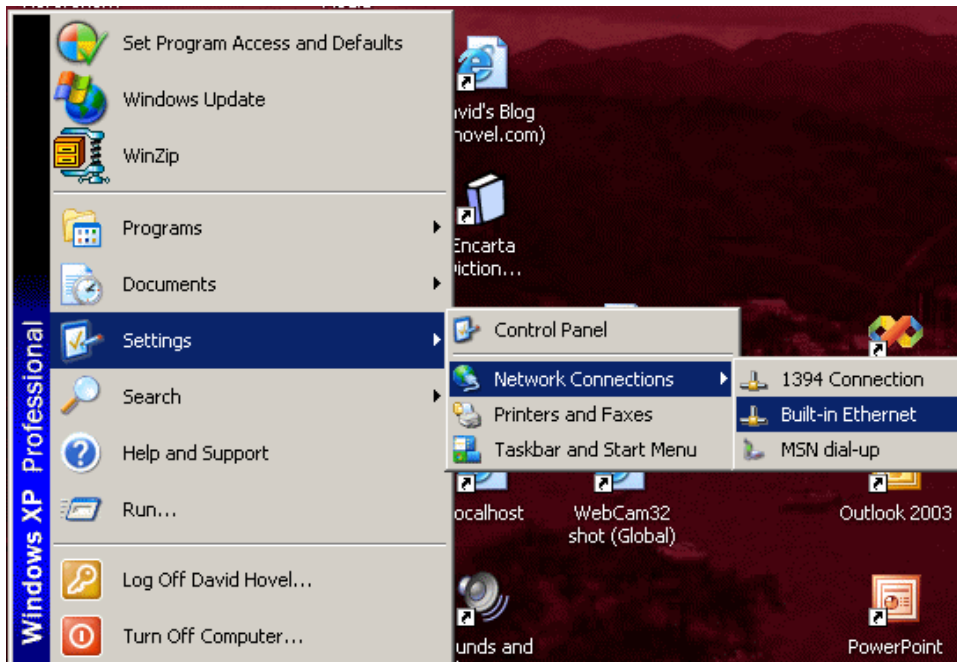
Using the Start Menu

Here's how the standard (i.e., non-classic) Start menu looks on Windows XP:



On some systems it may look like this (the "classic" start menu):

Configuring for BVI Cable and Wireless



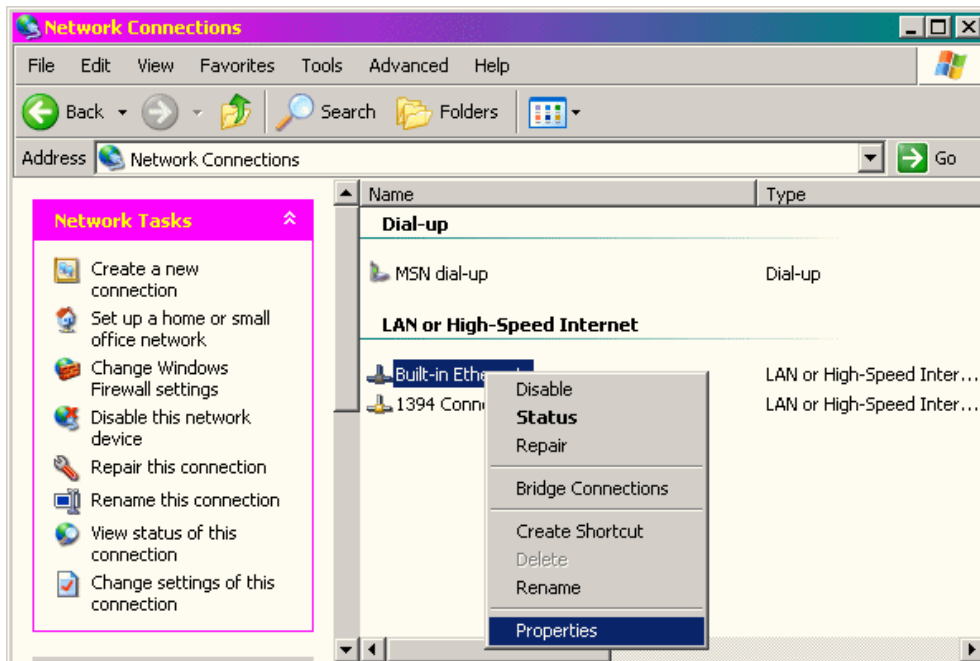
If you see the second (classic) version you can immediately select the network connection you're using and proceed to the *Connection Status* section below. If not, open the Control Panel.

Using the Control Panel

If you open the standard Windows XP Control Panel, click on "Network and Internet Connections", then click on "Network Connections". If you have the "classic" control panel, choose "Network Connections".

Network Connections

The Network Connections display looks like this:

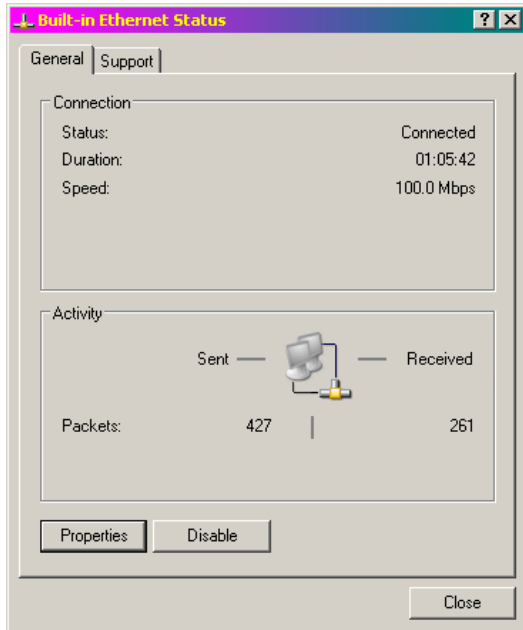


Configuring for BVI Cable and Wireless

As the picture shows, right-click on the connection you're using and select **Properties** from the pop-up menu.

Connection Status

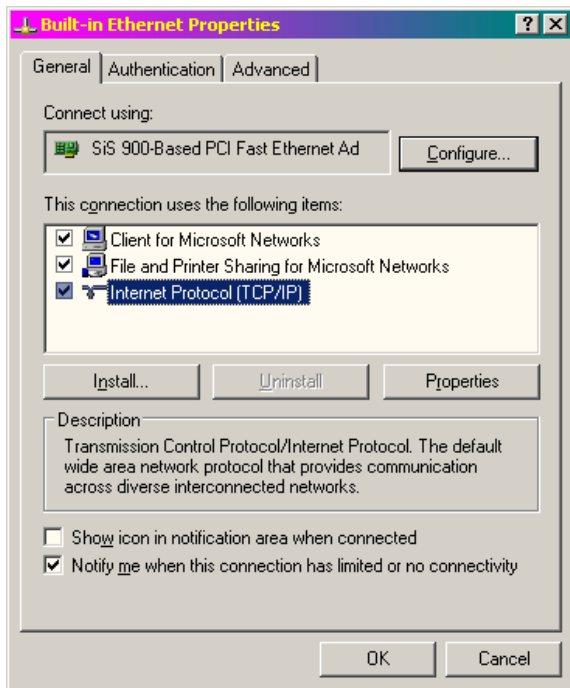
If you've used the Start menu to go directly to the network connection information, you'll see a Connection Status window like this:



Click the **Properties** button.

Connection Properties

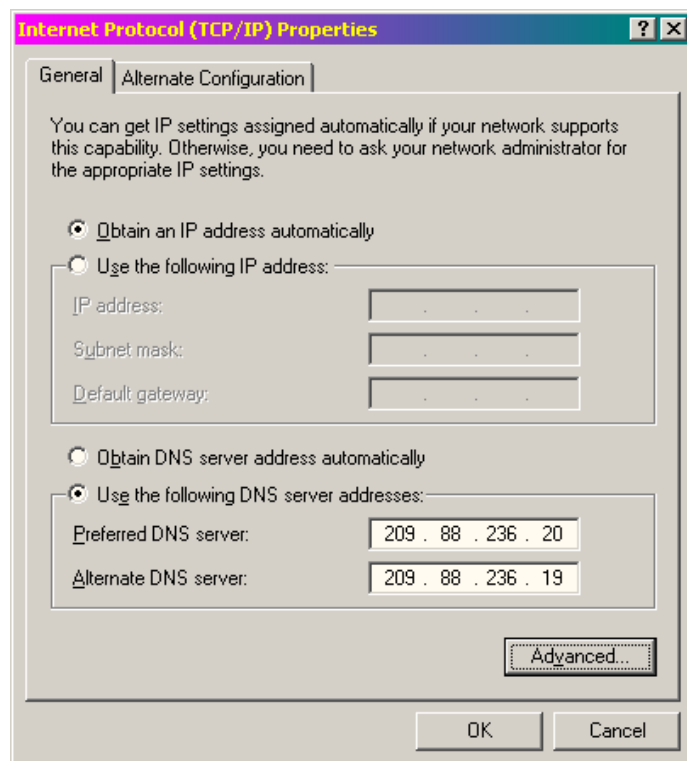
The Connection Properties dialog looks like this.



Click on (select) **Internet Protocol (TCP/IP)** and then click the **Properties** button

Internet Properties

The Internet Protocol Properties window looks like this:



Using the Internet Properties Window

To Configure for Cable & Wireless

If you're configuring for BVI Cable & Wireless, make your window look like the one above. In other words, first be sure the upper radio button is set to "Obtain an IP address automatically".

Then set the lower radio button to "Use the following DNS server addresses:", and enter the numbers shown in the "Preferred" and "Alternate" DNS server addresses. The numbers are **209.88.236.19** and **209.88.236.20**. It makes no difference which number is entered in which box.

To Reconfigure for Most ISPs

To reset your system for use in the U.S. or wherever your home is, simply choose the radio button "Obtain DNS server addresses automatically".

Finishing the Configuration

Now close each of the small (dialog) windows by clicking their OK buttons. Then close the Control Panel if you opened it.